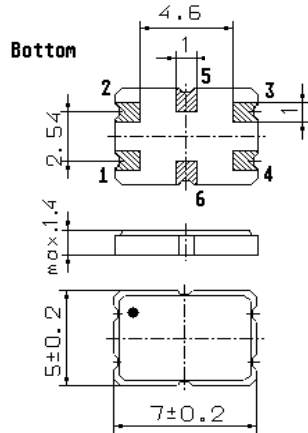


Specification for monolithic crystal filter:

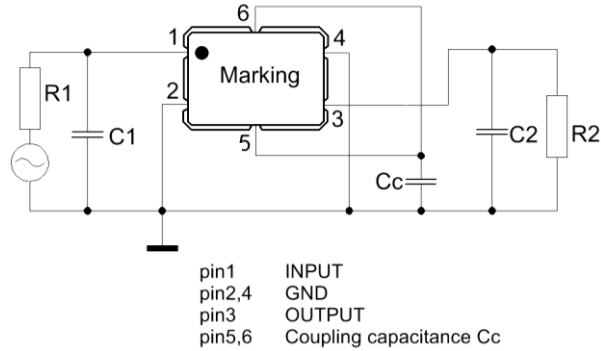
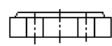
MQF 45.0 - 1200 / 14

1. General

1.1. Package:



GS 2



- 1.2. Type name: MQF 45.0-1200/14
- 1.3. Number of poles: 4
- 1.4. Operating temperature range: -40°C to +60°C
- 1.5. Storage temperature range: -55°C to +85°C

2. Electric values

2.1. Nominal centre frequency fo: 45.0 MHz

2.2. Pass band

- 2.2.1. Bandwidth between 3 dB - frequencies: $\geq f_o \pm 6.0$ kHz
- 2.2.2. Ripple: ≤ 1.0 dB at $f_o \pm 4.0$ kHz
- 2.2.3. Insertion loss: ≤ 2.5 dB
(measured on smallest attenuation in pass band)

2.3. Stop band

- 2.3.1. $f_o \pm 12.5$ kHz ≥ 15 dB
- 2.3.2. $f_o - 910$ kHz ≥ 80 dB

2.4. Terminating impedance (input and output): $550 \Omega // 3.0$ pF

2.4.1. Coupling capacitance Cc: 12.5 pF

2.5. Intermodulation

- frequency 1: 45.05 MHz / 45.10 MHz
- frequency 2: 44.95 MHz / 44.90 MHz
- input power: -15 dBm
- IM: > 90 dB

3. Marking: ● M45B10
date code

4. Environment conditions: Corresponding to Vectron standard CF001